

PROSTATE MR



Faculty:

Katarzyna J. Macura, MD, PhD, FACR

Course Director
Johns Hopkins University



Andrei Purysko, MD

Cleveland Clinic, Ohio

Course Dates

August 17–18 (Sat. – Sun.) (Australia)

August 10–11 (Sat. – Sun.) (Australia)

Course Overview



This 100-case, two-day course, is designed to provide practicing radiologists with intense training in the interpretation of multiparametric prostate MRI (mpMRI) and the use of Prostate Imaging — Reporting and Data System version 2 (PI-RADS® v2) for standardized communication of imaging findings. Throughout this program, participants will develop their interpretative skills at individual workstations by review of prostate mpMRI cases with pathology

correlation. A series of didactic lectures and workshop on MR-guided prostate biopsy techniques will complement the training session with focus on imaging techniques optimization.

Program Objectives

At the conclusion of this course, participants will be able to:

- Apply the principles of PI-RADS v2 and the scoring system during the interpretation of mpMRI of the prostate
- Report imaging findings using the standardized format
- Optimize prostate imaging protocols using the mpMRI principles to achieve the best diagnostic performance
- Provide guidance for targeted biopsies of the prostate
- Develop multidisciplinary collaborations and establish a quality assurance program for prostate imaging

Workstation

FUJI Synapse

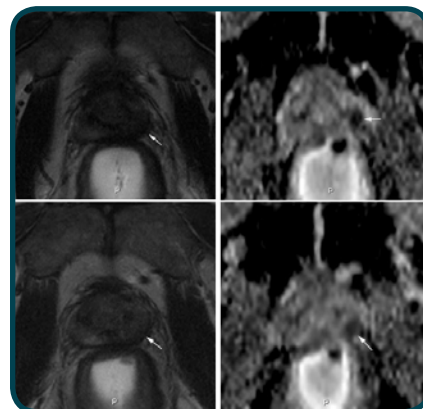
Certificate

Attendees who complete a minimum of 100 cases will be awarded a Certificate of Completion in Prostate MR.

	7:00 a.m.	Workstation Introduction
	8:15 a.m.	Introduction to PI-RADS v2
	8:30 a.m.	Using PI-RADS v2 for Scoring Prostate Lesions on mpMRI
	9:30 a.m.	Faculty Review of Cases, Supervised Case Review
	10:00 a.m.	Break
	10:15 a.m.	Faculty Review of Cases, Supervised Case Review
	11:30 a.m.	Techniques of Multiparametric Prostate MRI
	Noon	Lunch
Day 1	12:30 p.m.	Faculty Review of Cases, Supervised Case Review
	1:30 p.m.	Caveats for the Prostate mpMRI
	1:45 p.m.	Faculty Review of Cases, Supervised Case Review
	2:45 p.m.	Break
	3:00 p.m.	Low-Risk Versus High-Risk Prostate Cancer on mpMRI
	3:30 p.m.	Faculty Review of Cases, Supervised Case Review
	4:30 p.m.	Evidence-Based Clinical Indications for Prostate mpMRI
	5:00 p.m.	Faculty Review of Cases, Supervised Case Review
	5:30 p.m.	Cocktail Reception
	6:00 p.m.	Optional Time for Self-Review of Cases

	7:00 a.m.	Optional Time for Self-Review of Cases
	8:00 a.m.	Prostate MRI-Guided Biopsy
	8:30 a.m.	Workshop: Prostate MRI-Guided Biopsy
	10:00 a.m.	Break
	10:15 a.m.	Supervised Case Review
Day 2	Noon	Lunch
	12:30 p.m.	Developing Prostate Imaging Practice and Quality Assurance Program
	1:00 p.m.	Supervised Case Review
	2:45 p.m.	Break
	3:00 p.m.	Supervised Case Review
	4:00 p.m.	Optional Time for Self-Review of Cases
	5:00 p.m.	Course Concludes

Lectures are in bold



"All faculty were excellent, enthusiastic and patient."

— Rebecca L. Sahlman
Kennedy University Hospital, NJ